

Gynecologic Cancer InterGroup
Translational Research Brainstorming
October 2016
Lisbon



Dr David Millan

CONSULTANT PATHOLOGIST
SCOTTISH GYNAECOLOGICAL
CANCER GROUP

Representative of the GCIIG
Pathology Liaison group

Gynecologic Cancer InterGroup
Translational Research Brainstorming
October 2016
Lisbon



DESIGN OF GOOD STUDIES

START WITH A PATHOLOGICAL
DEFINITION OF THE DISEASE
UNDER STUDY

Gynecologic Cancer InterGroup
Translational Research Brainstorming
October 2016
Lisbon



How important are pathological
criteria?



Kommoss papers

Ovarian tumours

2013 - specialist review-

6.8% patients had a major diagnostic ,clinically relevant discrepancy in comparison to the initial diagnosis

2016-change in definition of disease 2002 vs. 2014

46% cases changed histotype.



PATHOLOGY

TISSUE DISSECTION PROTOCOLS ARE
ALSO ESSENTIAL

SURGICAL TRIALS

poor quality of surgical trials in
cervical cancer

Gynecologic Cancer InterGroup
Translational Research Brainstorming
October 2016
Lisbon



**MANY TRIALS ARE DEVALUED OR
INVALIDATED BY THE POOR
QUALITY OF THEIR PATHOLOGICAL
DEFINITION AND EVALUATION**



How can we improve?

- Trial specific pathology manual.
- Definition of acceptable and applicable diagnostic criteria
- Histopathological features
- Molecular profiling
- Review-various mechanisms

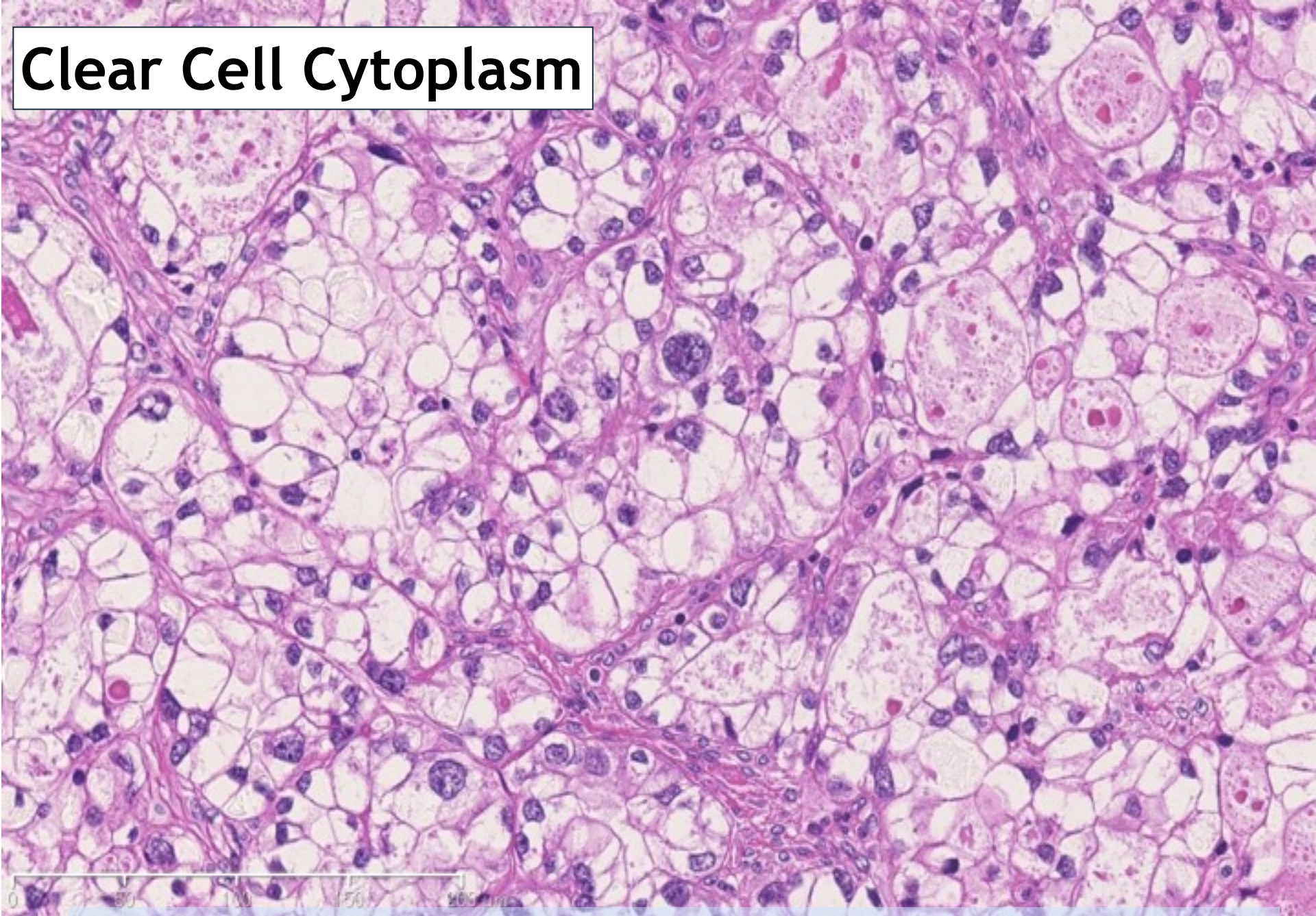
Gynecologic Cancer InterGroup
Translational Research Brainstorming
October 2016
Lisbon



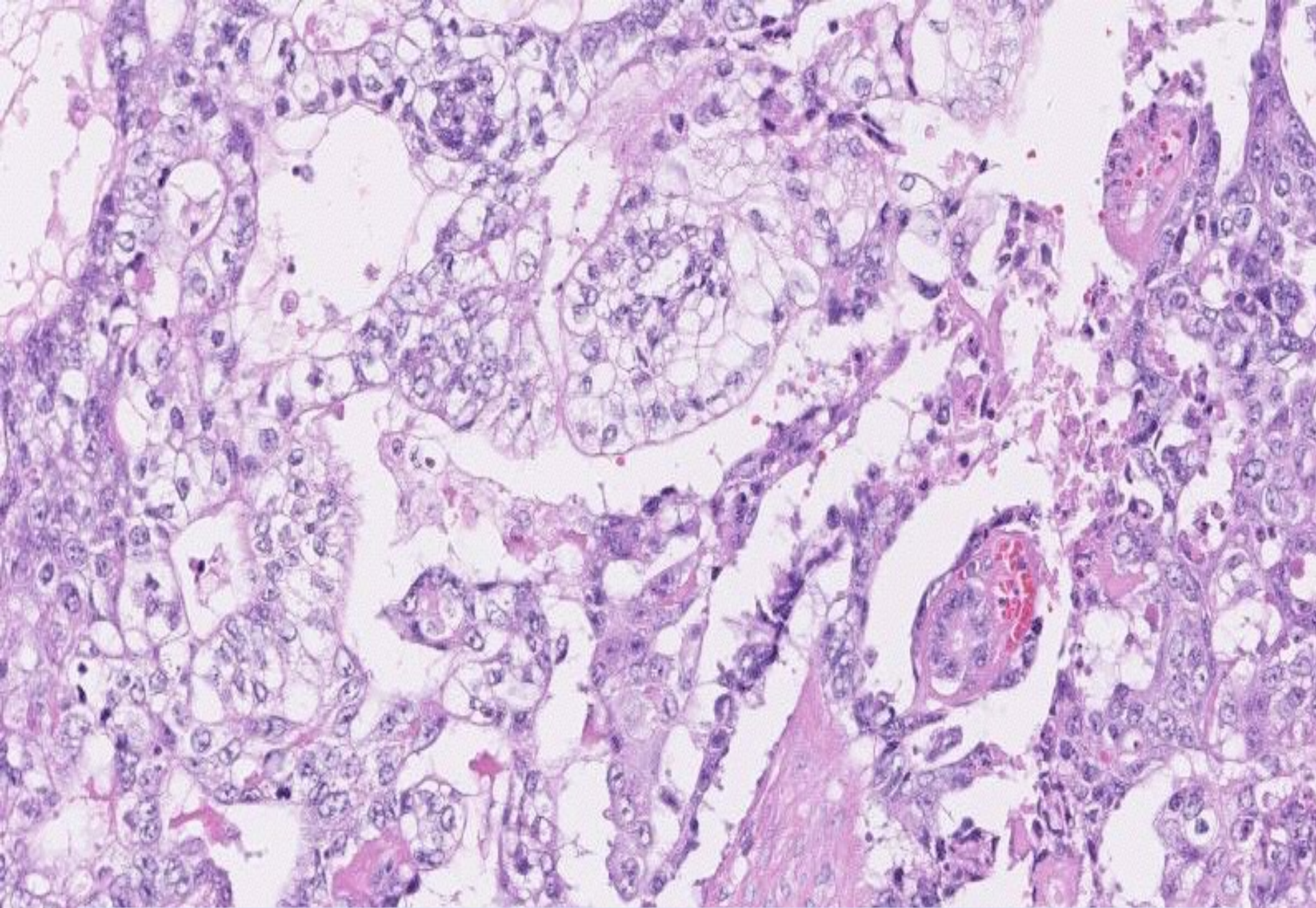
**THE PATHOLOGY MANUAL
IS CONTRUCTED BY ALL THE
PATHOLOGISTS
WORKING WITH THE PARTICIPATING
TRIAL GROUPS**

JGOG- CCC Trial

Clear Cell Cytoplasm



Higher power view of CCC in which numerous enlarged, hyperchromatic, atypical and bizarre nuclei are



True yolk sac tumor in a young patient. Note classical Schiller-Duval bodies and prominent clear cells.

TRIALS PATHOLOGY

- Stringency of definitions
- In 'TRIAL' terms pragmatism is needed in diagnostic criteria
- WHAT IS REASONABLE, OBVIOUS , ACCEPTABLE.
- Determined by participating representative and together with participating pathologists from the active trial groups.

Gynecologic Cancer InterGroup
Translational Research Brainstorming
October 2016
Lisbon



GCIG PATHOLOGY QUALITY

- REFLECTION OF THE TRIAL PATHOLOGY MANUAL AND ITS CLARITY OF DIRECTION
- RECOGNITION OF INTERNATIONAL ISSUES
- ESSENTIAL HARMONISATION REQUIREMENT
- IT RESOURCES
- POTENTIAL FOR SHARING



PATHOLOGY REVIEW

- DIFFERENT MODELS -slides and images
- SHARING
- TRIAL AND FUNDING DEPENDENT
- INCORPORATION INTO TRIAL DESIGN AND COSTING

Pathology Review

- Part of standard diagnostic process e.g..
French system regional and national , U.K.
MDT process.
- Trial specific case review- diagnostic
criteria may be more stringent
- International Review
- Managing discrepancies

Gynecologic Cancer InterGroup
Translational Research Brainstorming
October 2016
Lisbon



Once we have agreed that we
are all studying the same
disease entity and its stage

TRANSLATIONAL STUDIES

- TRIAL DESIGN AND ETHICS
- TISSUE COLLECTION
- PATHOLOGICAL INVOLVEMENT
- STANDARDISATION
- COLLABORATIVE STUDIES ,
- AUTHORSHIP RIGHTS

Gynecologic Cancer InterGroup
Translational Research Brainstorming
October 2016
Lisbon



Who has the tissue?

Gynecologic Cancer InterGroup
Translational Research Brainstorming
October 2016
Lisbon



The Pathologist !