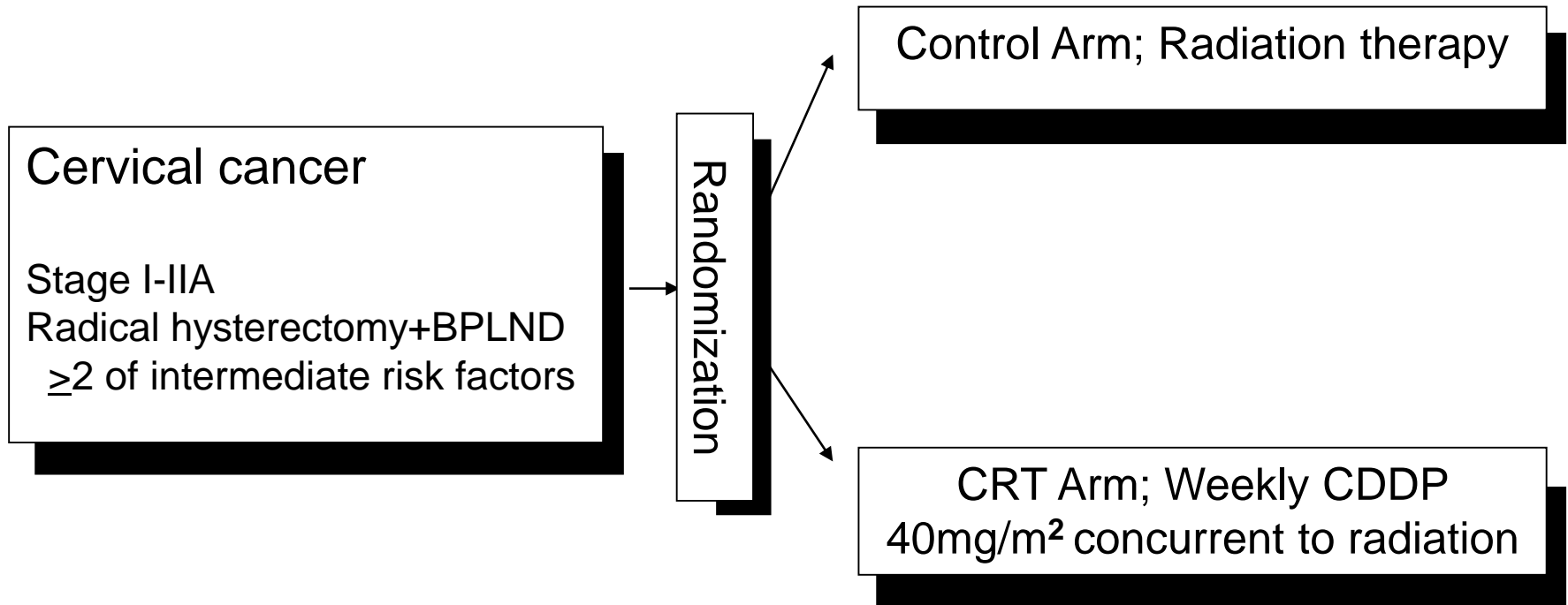


GOG 263/KGOG 1008

PI; Sang Young Ryu, MD

Randomized Phase III Clinical Trial of Adjuvant Radiation vs Chemoradiation In Intermediate Risk, Stage I/IIA Cervical Cancer Treated With Initial Radical Hysterectomy and Pelvic Lymphadenectomy



Eligibility Criteria

(GOG 263=GOG 92)

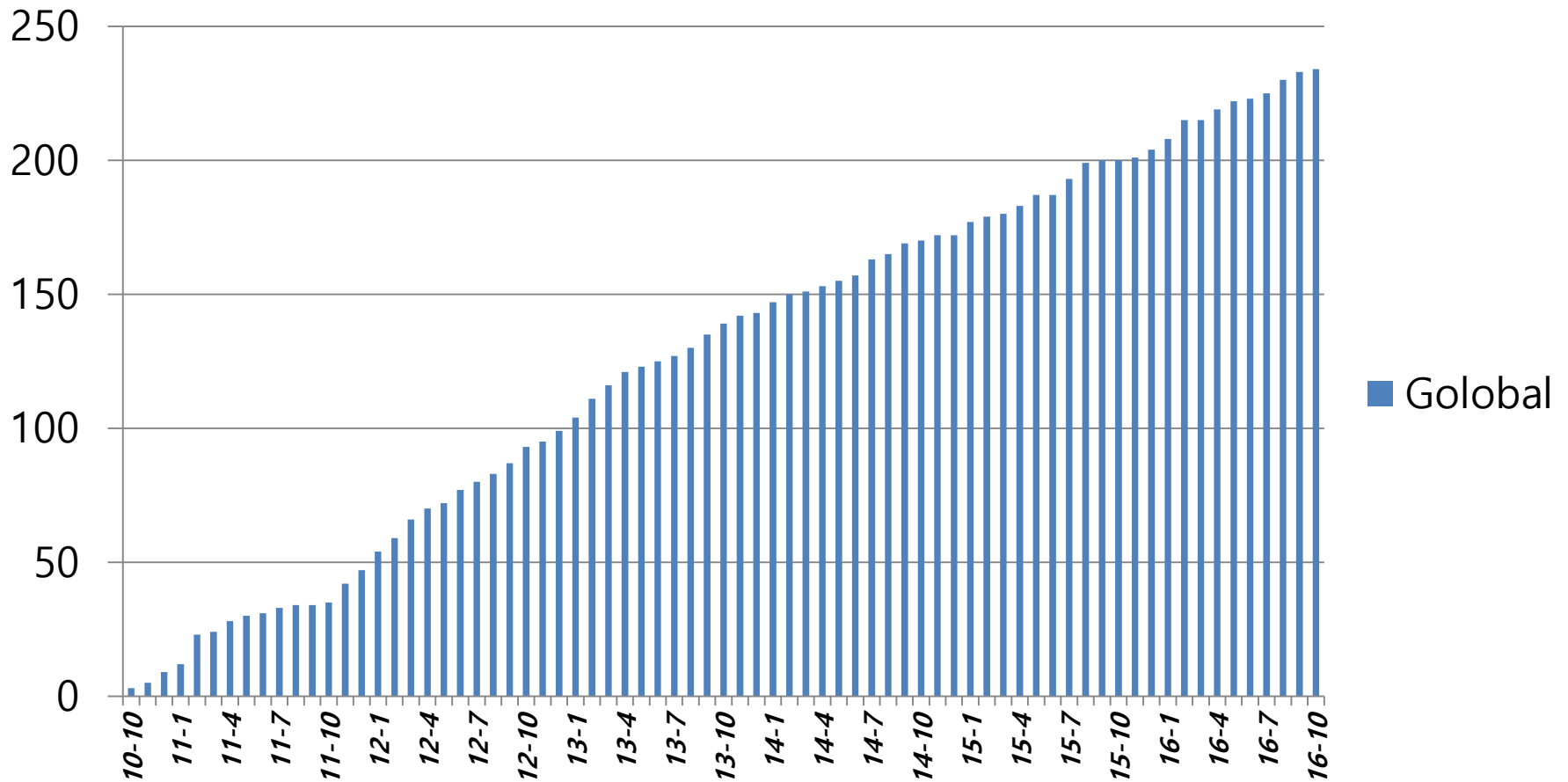
TABLE 1
Eligibility Criteria

CLS ^a	Stromal invasion	Tumor size
Positive	Deep 1/3	Any
Positive	Middle 1/3	≥2 cm
Positive	Superficial 1/3	≥5 cm
Negative	Deep or middle 1/3	≥4 cm

^a Capillary lymphatic space tumor involvement.

Accrual of GOG 263

Golobal



GYNECOLOGIC
CANCER INTERGROUP

An Organization of International Cooperative
Groups for Clinical Trials in Gynecologic Cancers

Welcome to TACO!



TACO



Korean Gynecologic Oncology Group

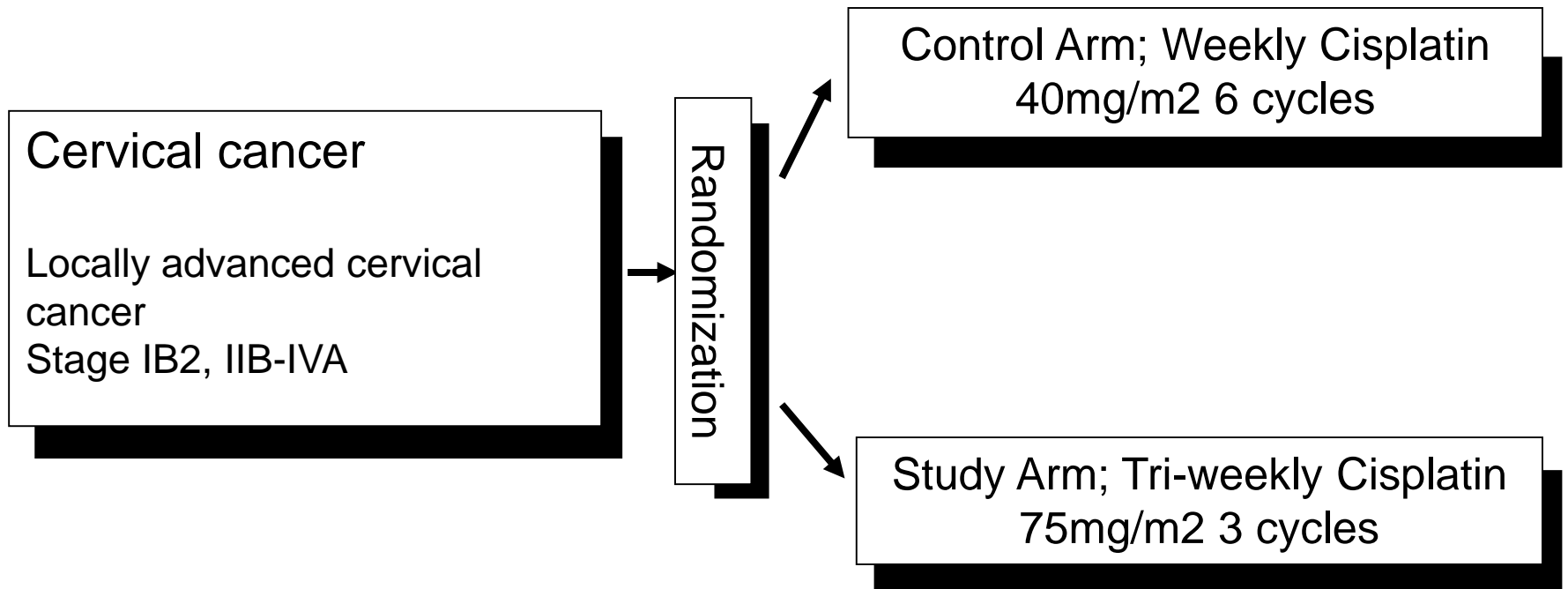


Asian Society Of
Gynecologic Oncology

GCIG/KGOG1027/TGCS2012: Randomized Phase III Clinical
Trial Comparing Weekly vs Tri-weekly Cisplatin Based
Concurrent Chemoradiation in Locally Advanced Cervical
Cancer

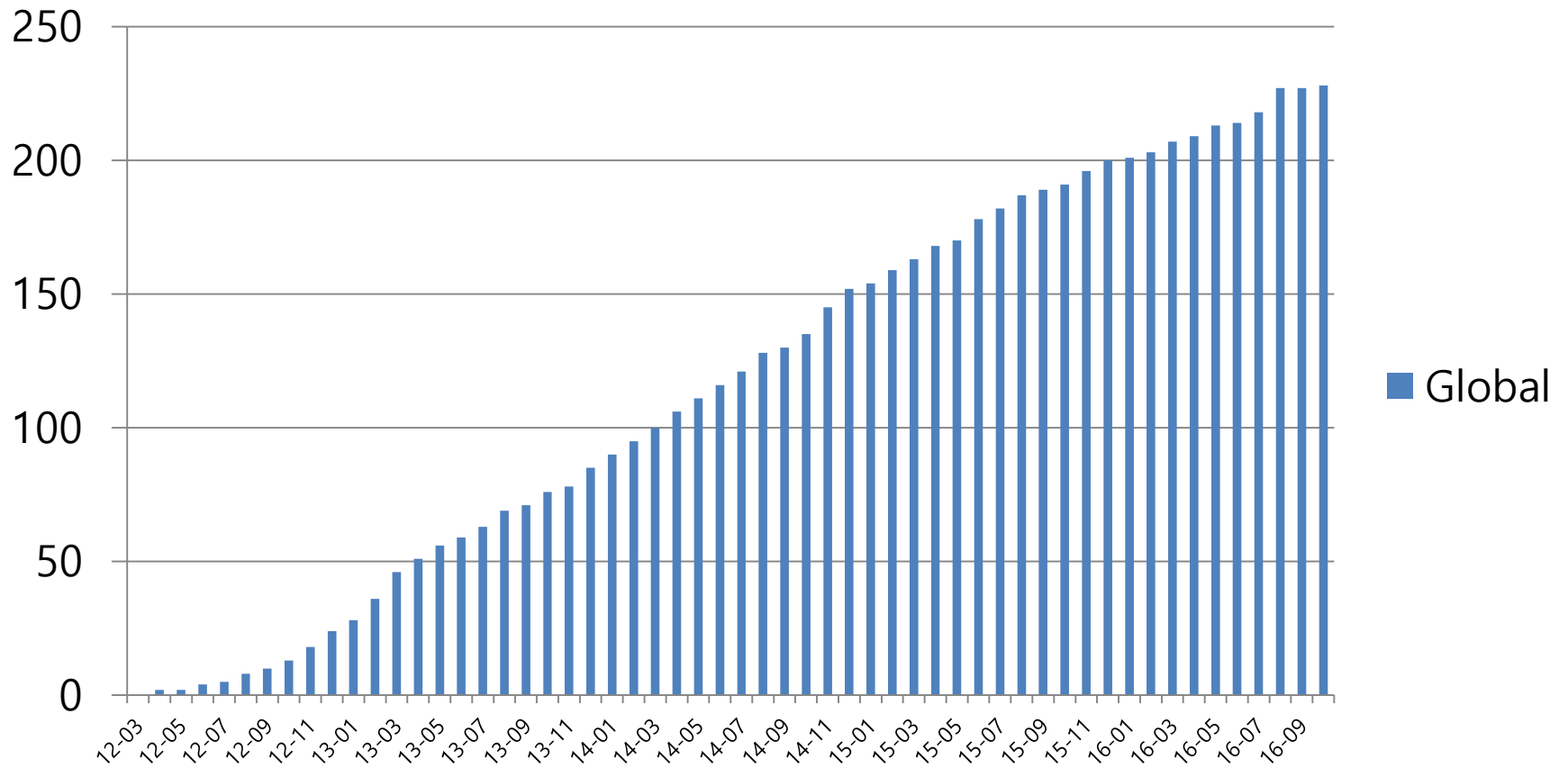
TACO

(Tri-weekly Administration of Cisplatin in Locally Advanced Cervical Cancer)



Accrual of TACO

Global



TACO Issue

- Case reimbursement
 - 500-> 250\$ USD after July 2016
- Intramural funding support for DM
 - E-Velos, CRC
- Expansion of participating country
 - Brazil, Colombia
- IMRT
 - RT QA for IMRT