

AURELIA QOL substudy

Dr Chee Lee

ANZGOG

AURELIA publications so far.....

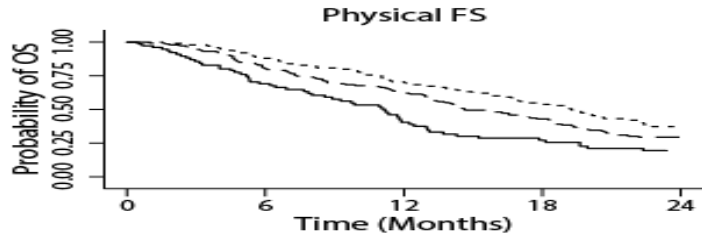
Topic	Authors	Journal
Primary endpoint (PFS, OS)	Pujade-Lauraine et al	JCO, 2014
Secondary endpoint (QOL)	Stockler et al	JCO, 2016
Independent radiological review	Hussain et al	Gynecol Oncol, 2016
Chemotherapy cohort	Poveda et al	JCO, 2015
CA125 vs RECIST	Lindeman et al	Annals of Oncology, 2016
Primary vs secondary platinum resistance	Trill et al	Annals of Oncology, 2016
Elderly subpopulation	Sorio et al	Gynecol Oncol, 2017
Concurrent vs sequential bevacizumab administration	Bamias et al	Annals of Oncology, accepted for publication
Prognostic value of baseline QOL	Roncolato et al	Annals of Oncology, accepted for publication

AURELIA ongoing projects

Topic	Project lead
Hypertension and outcome	Bamias
Prognostic nomogram	Lee
Anxiety and depression	Wenzel
Quality adjusted PFS	Lee

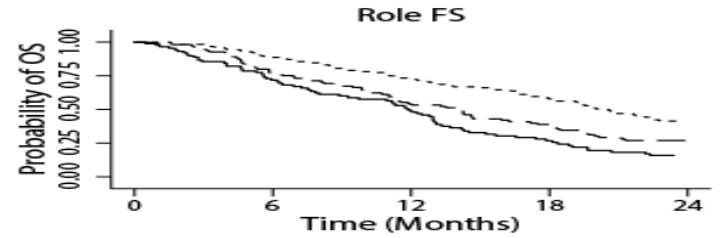
Prognostic value of baseline QOL

- Systematic reviews of different advanced cancers report strong association between QOL and survival (Gotay et al, JCO2008; Montazeri et al, HQLR2009; Chang et al, J Pain Management 2015)
- Performance status, CA125 level, ascites, platinum-free interval, platinum resistance, and size of the tumour are prognostic factors in platinum resistance OVCA (Lee, ASCO 2015)
- We examined whether baseline QOL, together with clinical factors, provide improved prognostic discrimination.



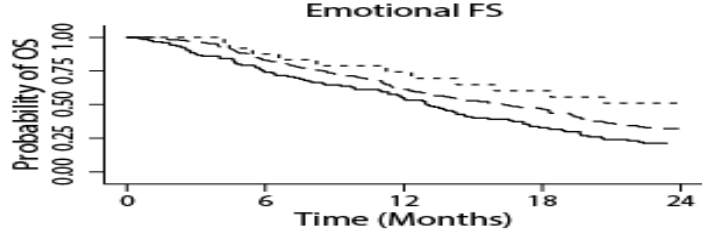
Number at risk

score >92	102	87	68	51	24
Score 67-92	149	117	91	58	31
Score <67	78	49	28	18	10



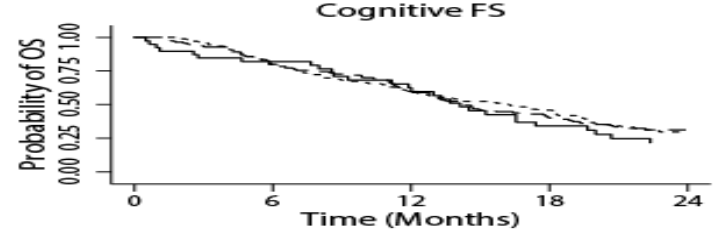
Number at risk

score >92	127	110	91	70	36
Score 67-92	111	81	54	36	18
Score <67	91	62	42	22	11



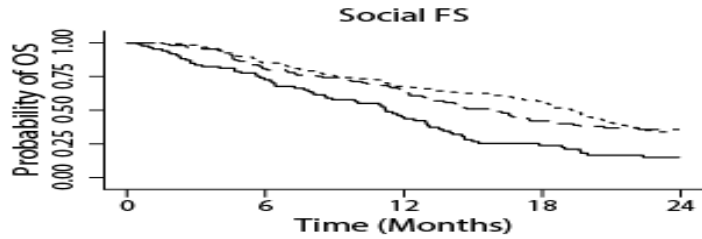
Number at risk

score >92	25	21	16	13	7
Score 67-92	177	142	104	76	38
Score <67	122	86	63	35	19



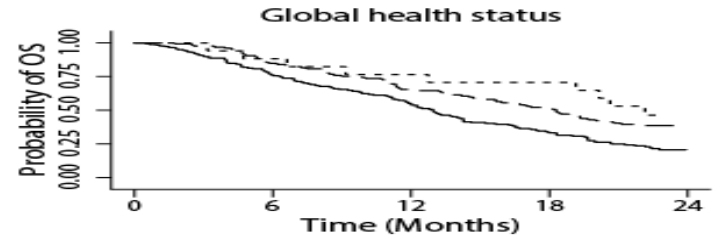
Number at risk

score >92	173	131	97	70	30
Score 67-92	112	88	65	42	27
Score <67	39	30	22	12	7



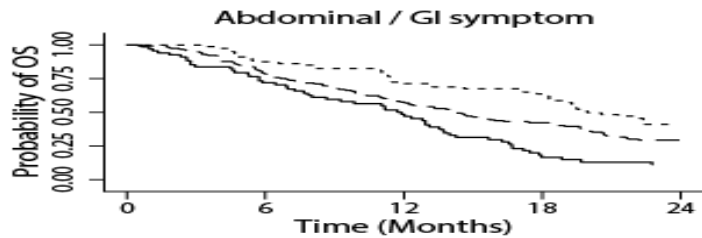
Number at risk

score >92	123	102	81	66	28
Score 67-92	113	87	67	41	28
Score <67	86	59	35	17	8



Number at risk

score >92	18	15	13	12	5
Score 67-92	128	105	81	61	32
Score <67	179	130	90	52	27



Number at risk

Score <13	68	48	31	10	6
Score 13-44	160	117	85	59	33
score >44	81	70	58	50	22

Functional Score (FS) Symptom Score

----- score >92 score <13

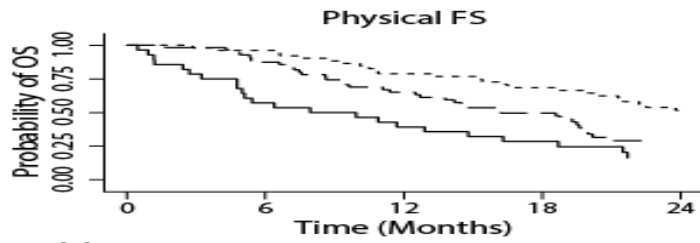
----- score 67-92 score 13-44

----- score <67 score >44

Functional scales are from QLQ-C30 where high score indicates better function.
Symptom scales are from QLQ-OV28 where high score indicates worse symptom.

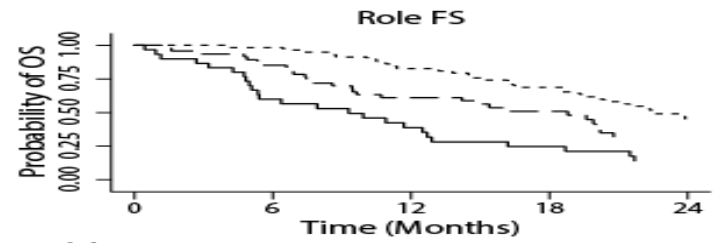
Prognostic value of baseline QOL

	(A) Univariable analysis					(A) Multivariable analysis*			
	n	Median OS (months)	HR	95% CI	P	n†	HR	95% CI	P
Overall survival									
Physical function score	322				<0.001	300			0.02
<67	76	11.0	1				1		
67–92	147	14.7	0.62	(0.45– 0.85)			0.75	(0.52– 1.08)	
>92	99	19.3	0.44	(0.31– 0.63)			0.56	(0.37– 0.85)	
Abdominal /gastrointestinal symptom score	302				<0.001	300			0.03
<13	76	19.7	1				1		
13–44	159	14.3	1.51	(1.08– 2.12)			1.13	(0.80– 1.61)	
>44	67	11.9	2.56	(1.74– 3.76)			1.67	(1.10– 2.54)	



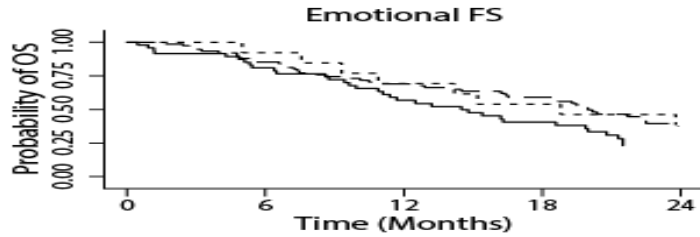
Number at risk

score >92	52	50	40	33	22
Score 67-92	56	48	34	24	10
Score <67	28	16	11	7	4



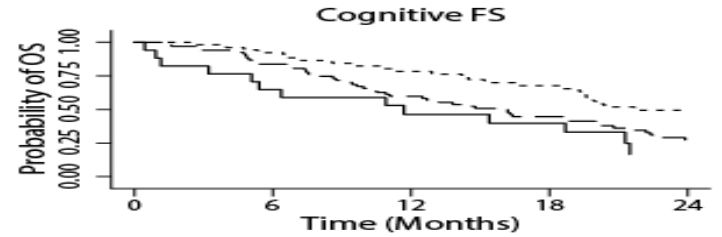
Number at risk

score >92	58	57	48	39	23
Score 67-92	47	39	26	18	9
Score <67	30	18	11	7	4



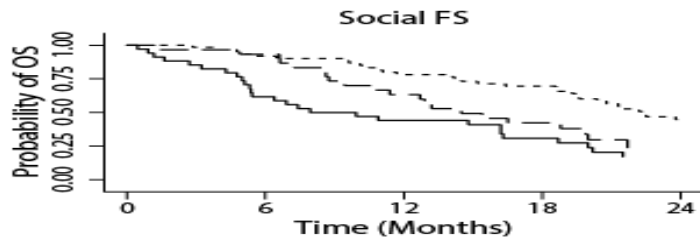
Number at risk

score >92	13	12	9	7	5
Score 67-92	75	63	50	39	21
Score <67	47	38	25	17	9



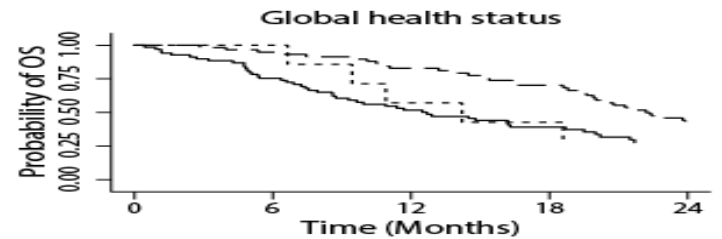
Number at risk

score >92	52	47	38	30	19
Score 67-92	67	56	40	28	15
Score <67	17	11	7	6	2



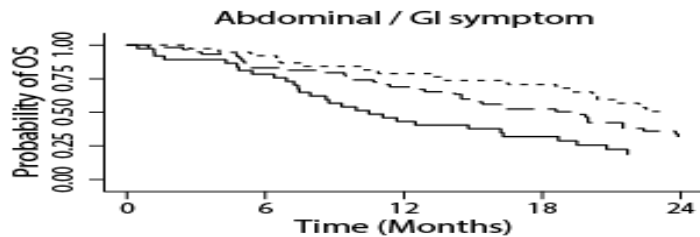
Number at risk

score >92	61	55	46	38	21
Score 67-92	30	28	18	11	4
Score <67	34	21	14	9	5



Number at risk

score >92	7	7	4	3	2
Score 67-92	59	56	47	38	21
Score <67	69	51	34	23	13



Number at risk

Score <13	37	29	16	10	5
Score 13-44	59	48	38	28	15
score >44	38	35	30	25	16

Functional Score (FS) Symptom Score

----- score >92 ----- score <13

- - - - - score 67-92 - - - - - score 13-44

_____ score <67 _____ score >44

Functional scales are from QLQ-C30 where high score indicates better function.
Symptom scales are from QLQ-OV28 where high score indicates worse symptom.

Information provided by QOL relative to patient and disease factor

Statistical model	C statistic	Performance of statistical model relative to the full model (%)*
Full [#]	0.7131	
Quality of life only [†]	0.6099	85.5
Disease only [‡]	0.6713	94.1
Patient only [§]	0.6101	85.6
Quality of life and patient	0.6557	92.0
Quality of life and disease	0.6968	97.7
Patient and disease	0.6950	97.5

[#] Full statistical model refers to the best statistical model with quality of life, disease and patient factors for predicting overall survival

* Performance is calculated as the C statistic relative to the full model C statistic

[†] Quality-of-life-only model refers to the statistical model with only physical functioning and abdominal / gastrointestinal scores for predicting overall survival

[‡] Disease-only model refers to the statistical model with only ascites, CA125 level, platinum-free interval, primary platinum resistance, and size of measurable lesions for predicting overall survival

[§] Patient-only model refers to the statistical model with only performance status score for predicting overall survival.