

# OVAR 16 QOL Update

## **Quality of life in patients with advanced epithelial ovarian cancer (EOC)**

Michael Friedlander<sup>1</sup>; Joern Rau<sup>2</sup>; Chee Khoo Lee<sup>3</sup>; Werner Meier<sup>4</sup>; Anne Lesoin<sup>5</sup>; Jae-Weon Kim<sup>6</sup>;  
Andres Poveda<sup>7</sup>; Martin Buck<sup>8</sup>; Giovanni Scambia<sup>9</sup>; Muneaki Shimada<sup>10</sup>; Felix Hilpert<sup>11</sup>; Madeleine T.  
King<sup>12</sup>; Philip Debruyne<sup>13</sup>; Alessandra Bologna<sup>14</sup>; Susanne Malander<sup>15</sup>; Bradley J. Monk<sup>16</sup>; Edgar  
Petru<sup>17</sup>; Paula Calvert<sup>18</sup>; Thomas J. Herzog<sup>19</sup>; Catherine Barrett<sup>20</sup>; Andreas du Bois<sup>21</sup>

# Health-Related Quality of Life

Secondary endpoint: evaluate health-related quality of life (HRQOL) as measured by **EORTC QLQ-C30**, **OV28** and **EQ-5D** (captures health status across five dimensions: mobility, self-care, usual activities, pain/discomfort, anxiety/depression)

- Data were collected at baseline, week 13, months 7, 10, 13, 16, 25 (end of treatment), and 31 (post-treatment)

Pre-specified analyses examined HRQOL differences while on treatment

Mixed-model repeated measures analysis

# Exploratory Hypotheses

Maintenance therapy with pazopanib will result in a small but statistically significant decline in global HRQOL and more side effects during the time on treatment, but will be associated with an overall benefit to patients

Specifically:

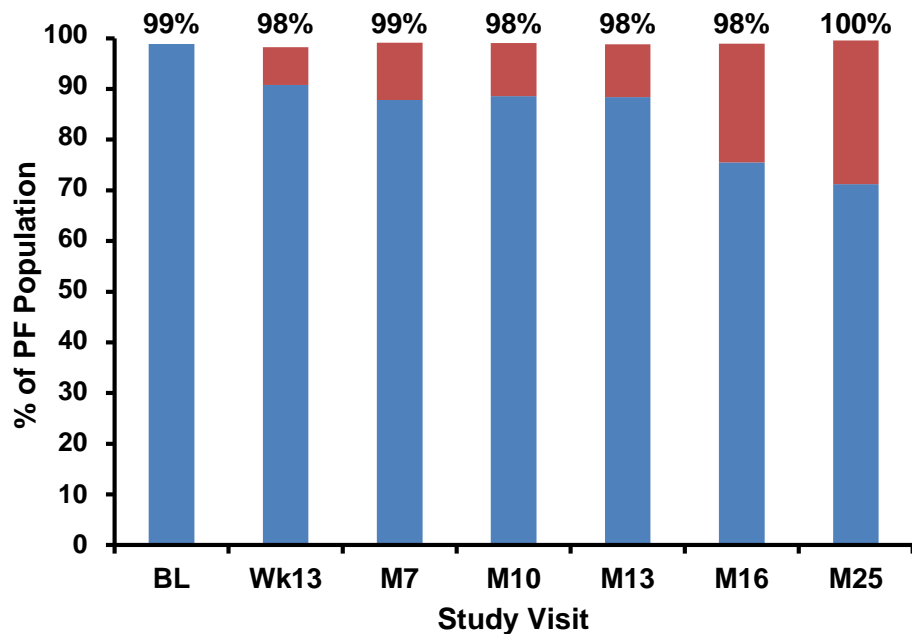
Pazopanib will be associated with superior quality adjusted PFS

Progressive disease results in a decline in quality of life

Pazopanib will delay the time to second line therapy

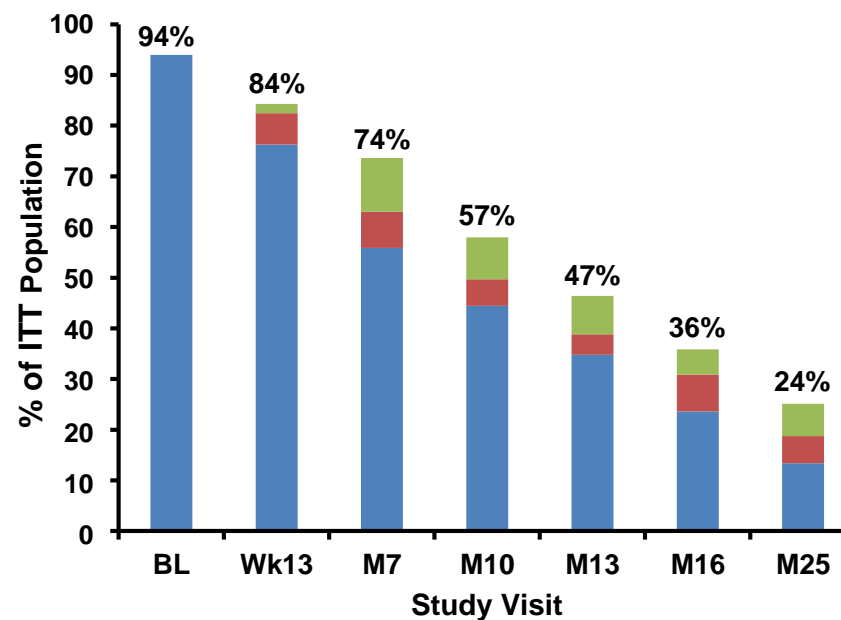
# Proportion of EQ-5D Questionnaires Completed

## Progression-free (PF) Population



■ on treatment ■ off treatment

## Intent-to-treat (ITT) Population



■ PF on treatment ■ PF off treatment ■ PP

# Prespecified Analyses per Protocol

Difference in change from baseline in HRQOL scores  
between treatment groups\*

QLQ-C30 Global Health Status

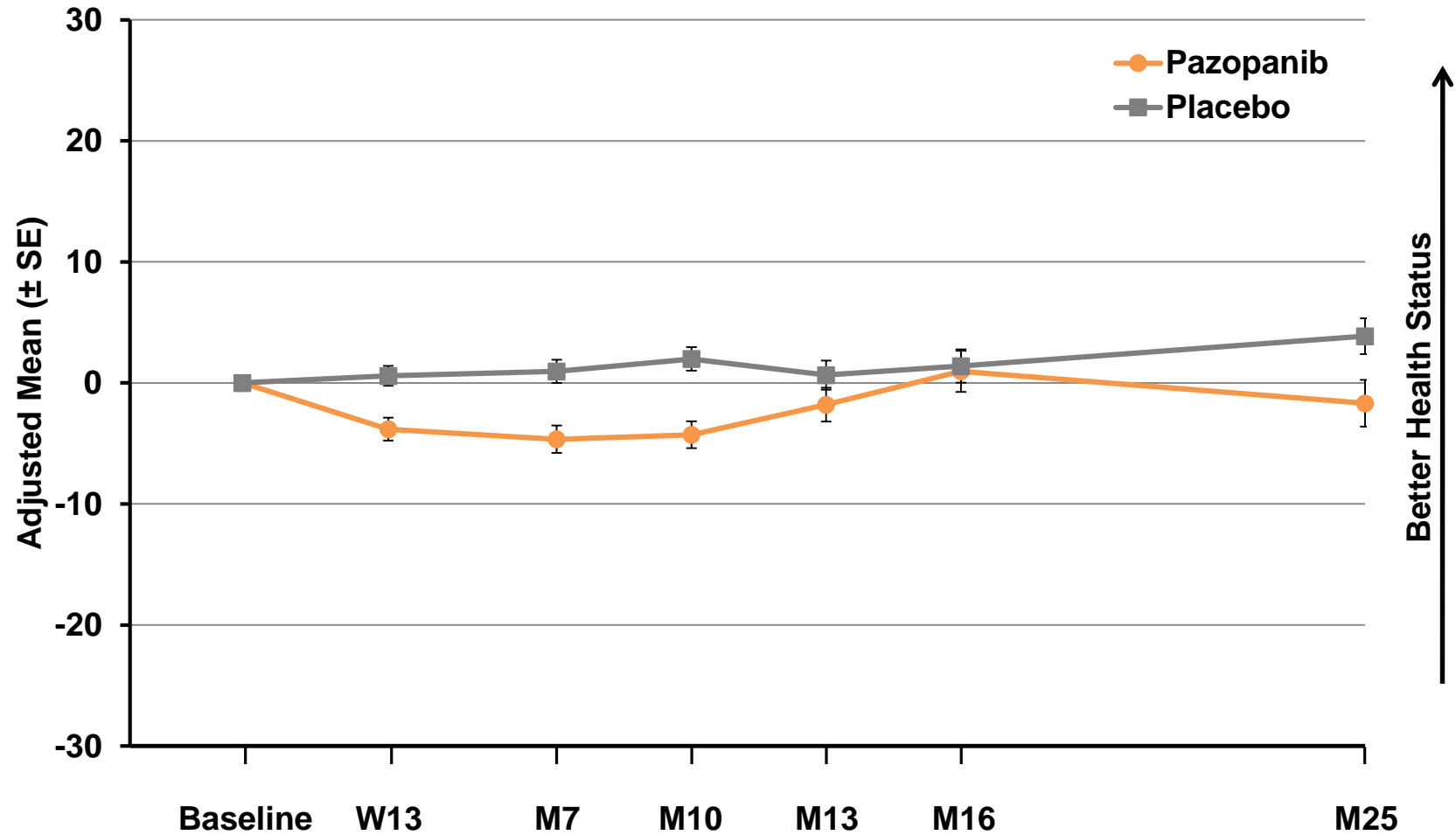
OV-28 subscales

EQ-5D

\*Mixed model repeated measure analysis

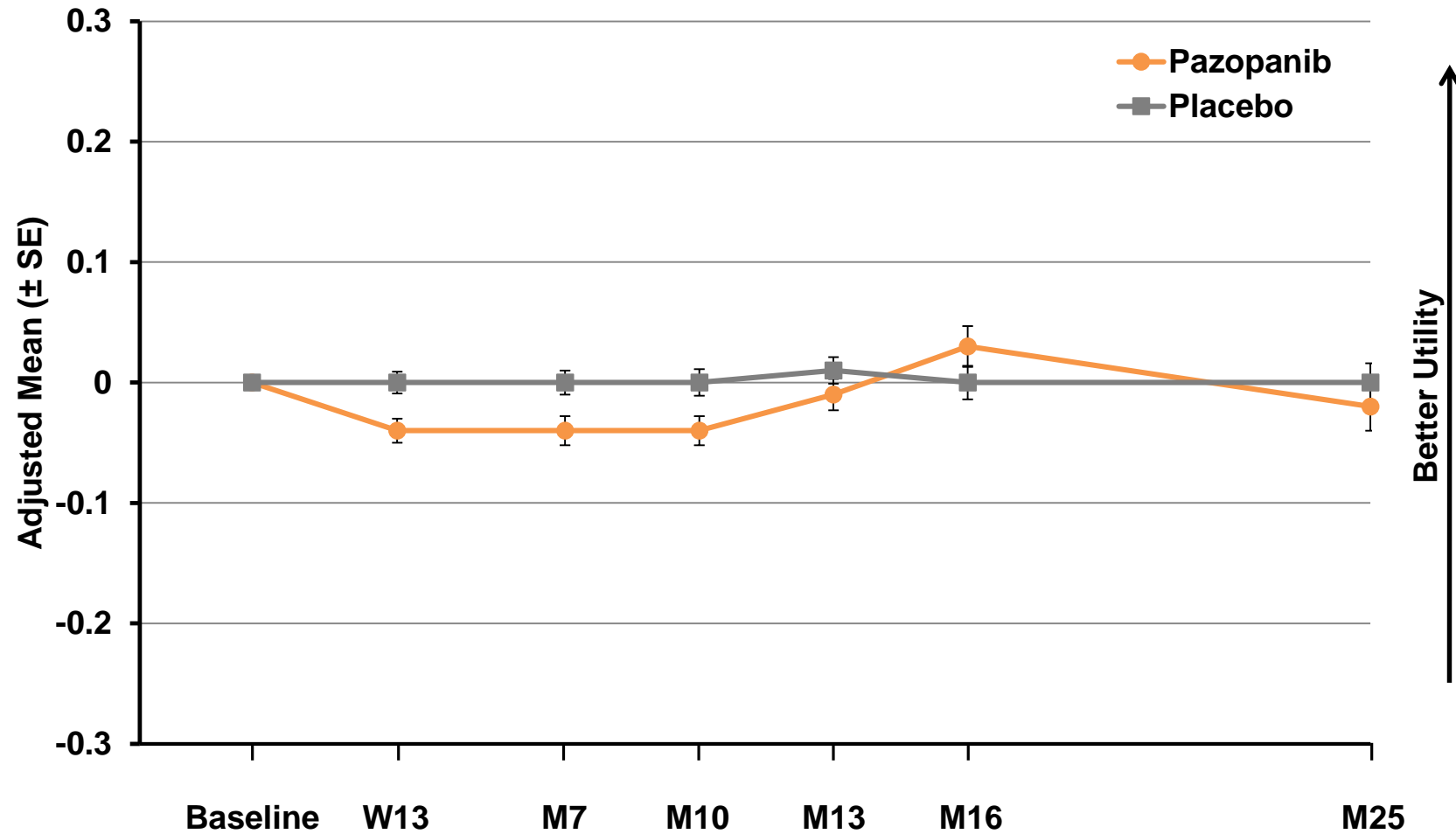
Interpretation of clinical significance followed Cocks et al 2011 and Pickard et al 2007

# QLQ-C30 Global Health Status



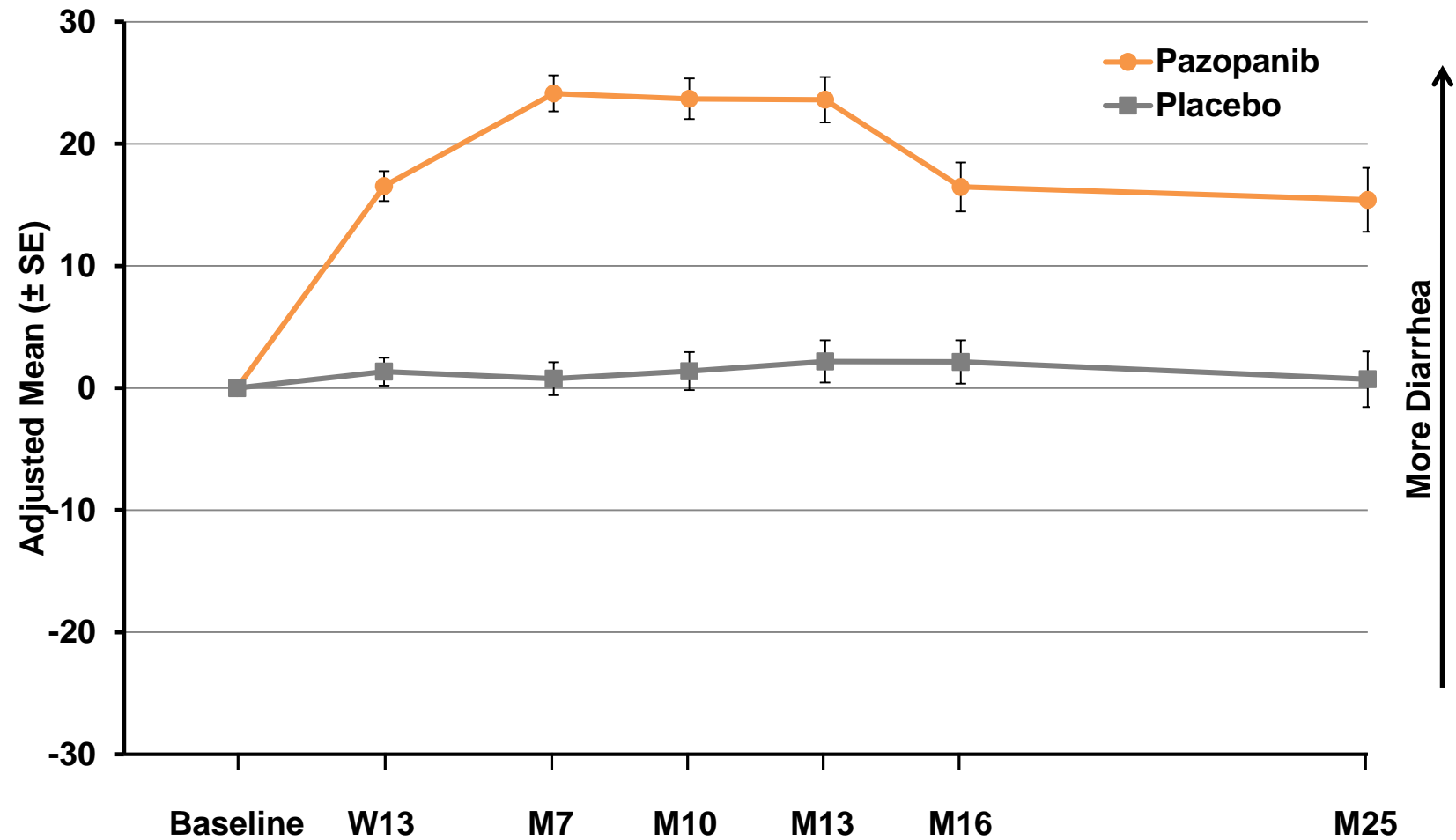
Abbreviations: M, month; SE, standard error of the mean; W, week.

# EQ-5D Utility Index



Abbreviations: M, month; SE, standard error of the mean; W, week.

## QLQ-C30 Diarrhea (ITT)



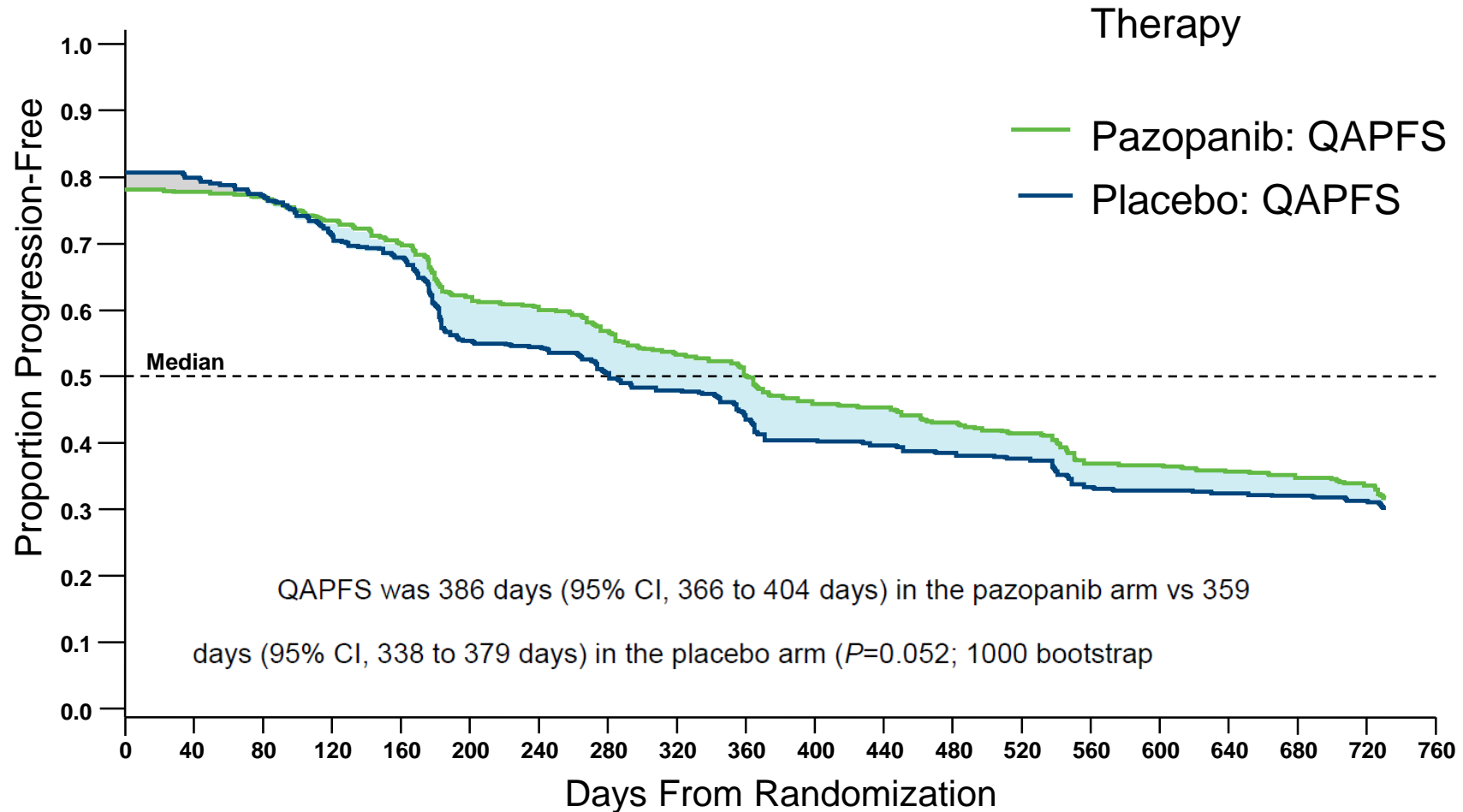
Abbreviations: ITT, intention-to-treat; M, month; SE, standard error of the mean; W, week.



# Post Hoc / Exploratory Analyses

Evaluate the trade-offs between treatment efficacy and treatment-related toxicity

# Quality-Adjusted PFS (QAPFS)



# Post Hoc Analysis

QLQ-C30 after progression

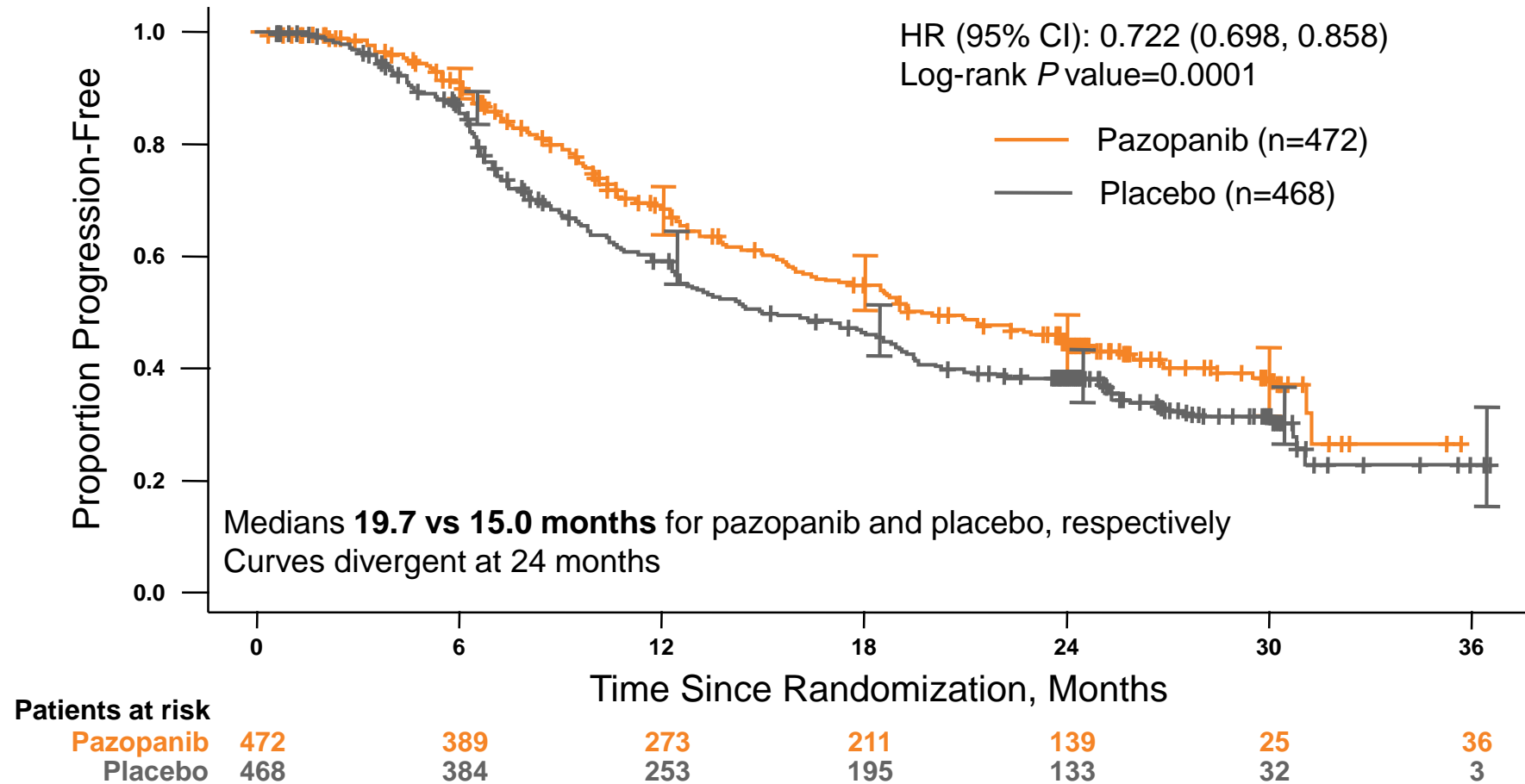
QLQ-C30 Global Health Status (GHS) deteriorates with progression

8.6 points difference between pre- and post-progression ( $P < 0.0001$ )\*

\*paired t-test; analysis included patients with pre- and post-progression data pooled across treatment arms (N=**206**)

# Post Hoc Analysis

## Time to Subsequent Anticancer Therapy



# Conclusions

Maintenance therapy with pazopanib results in an improvement in median PFS of 5.6 months

a small decrement in overall HRQOL for patients on treatment

a significant increase in patient-reported diarrhea

Progression results in worse HRQOL and initiation of further chemotherapy

Quality-adjusted PFS supports the net value of maintenance therapy

Limitations of post-hoc analyses

highlight the importance of including a priori HRQOL hypotheses in future studies