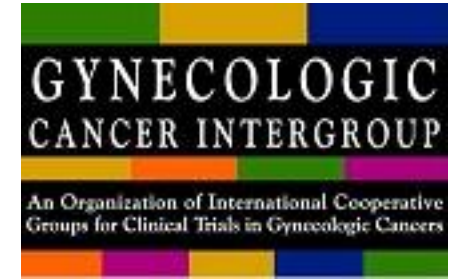
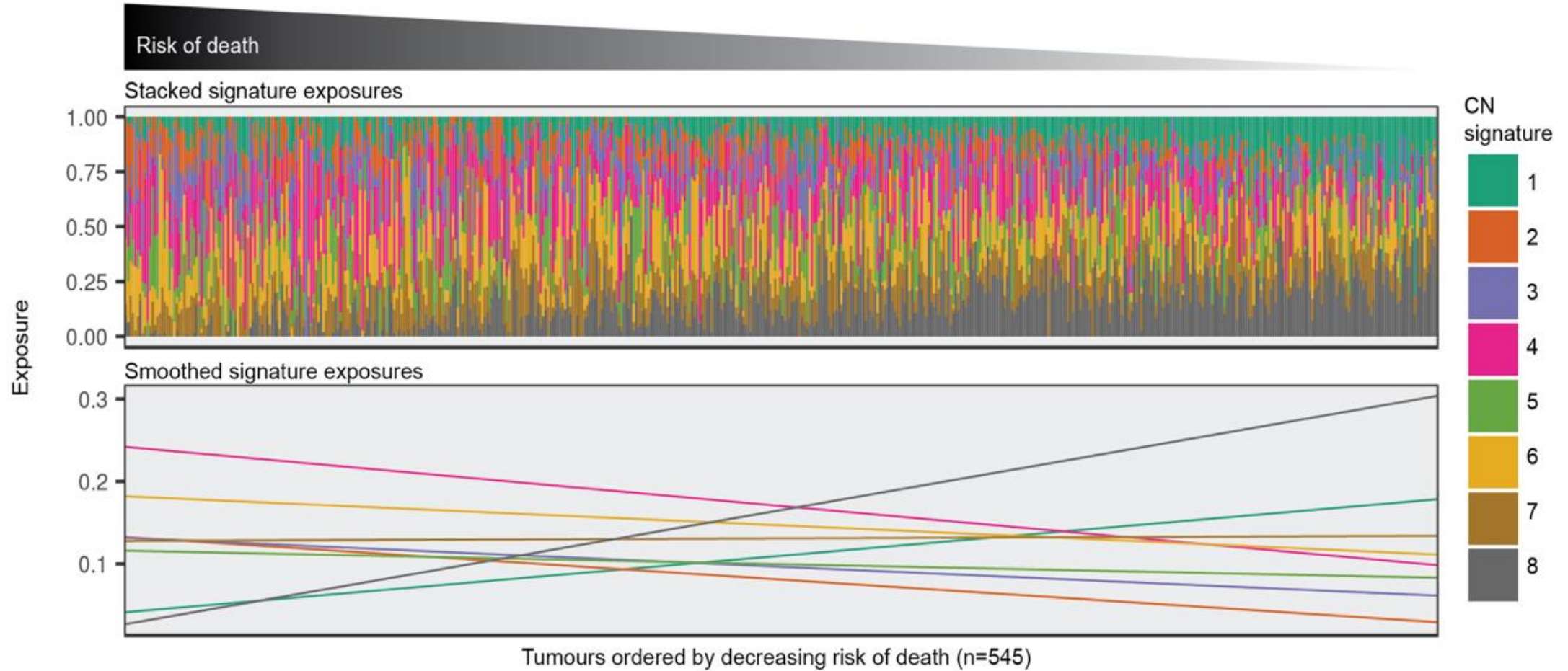


Translational Research
Committee
REPORT to GA
Vienna November 2017



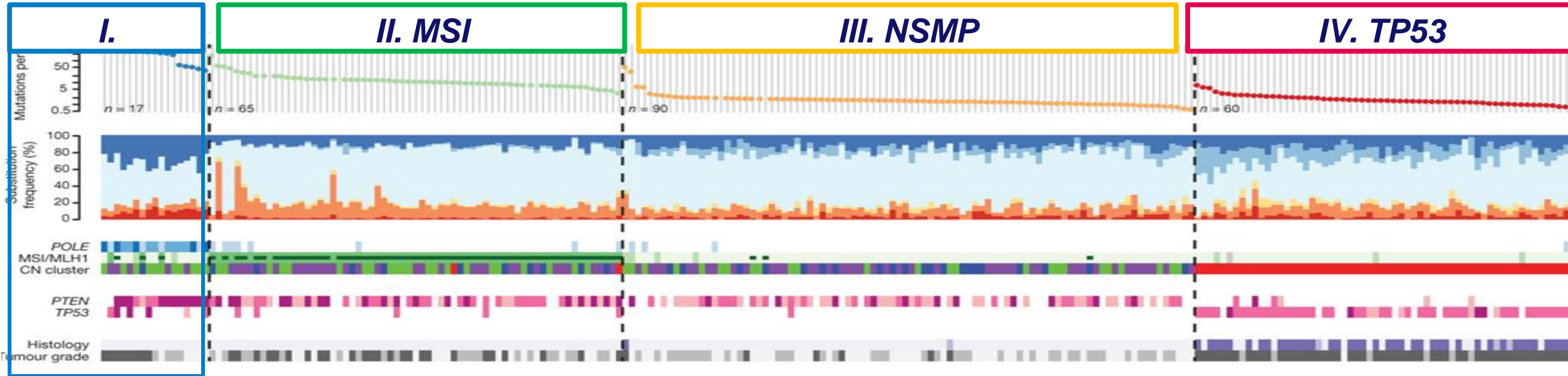
Chair C Gourley/Co-Chair D Mezzanzanica

CN signatures predict survival



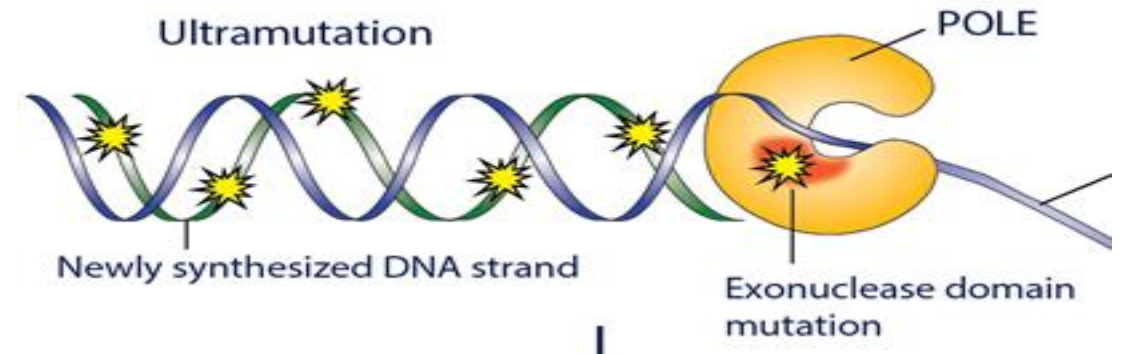
P = 0.005 training set, P = 0.03 test set

The molecular landscape of endometrial cancer



I. *POLE*

- Mutations in exonuclease domain of *POLE*
- Ultramutated
- Low CNA
- Endometrioid (50% G3)



Molecular integrated VS standard indications for adjuvant treatment

