

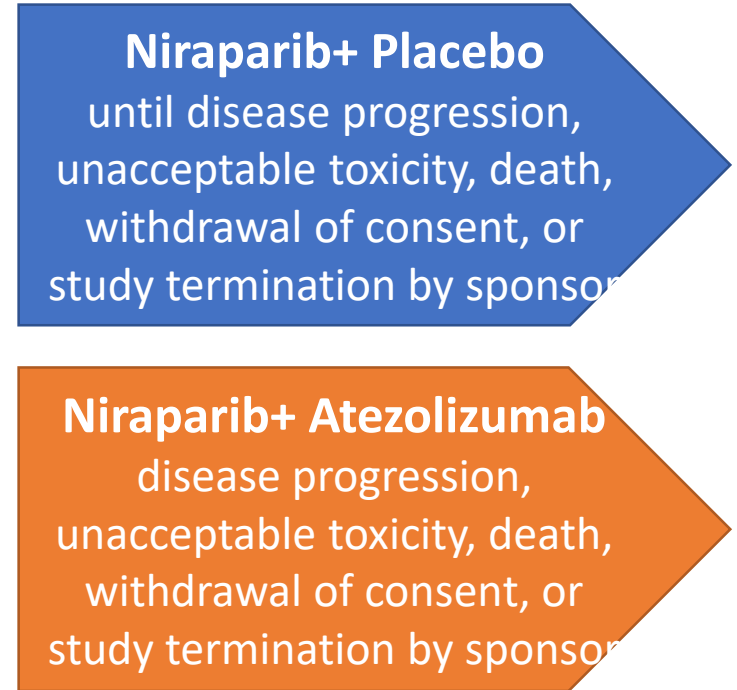
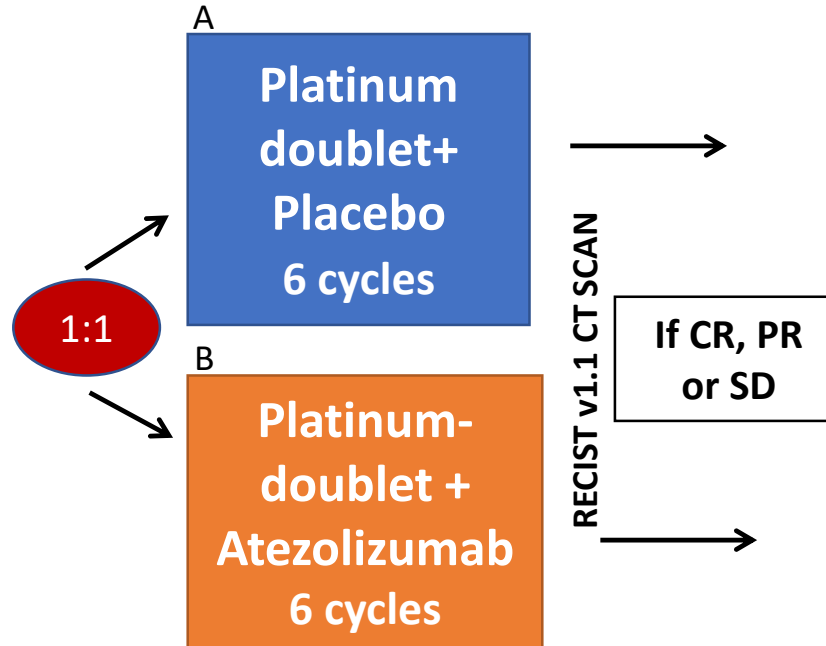
# ENGOT-OV41/GEICO 69-O/ANITA

GEICO (lead), GINECO, AGO, BGOG, MITO, MANGO, ISGO, TRGOG?

N= 414 patients

- Recurrent high- grade serous or endometrioid, or undifferentiated ovarian, primary peritoneal or tubal carcinoma
- TFIp >6 months
- ≤ 2 prior lines
- Measurable disease
- ECOG ≤ 1

**RANDOMIZATION**



**Stratification factors:**

- Platinum based regimen selected
- PFI (6-12 months vs > 12 months)
- BRCA mutation status (mutated vs. non-mutated)

**Primary Endpoint:**

- PFS by RECIST v.1.1
- Secondary endpoints:**
- Safety and tolerability
  - TFST, TSST, PFS2, OS
  - ORR, DOR
  - QoL/PRO

The addition of atezolizumab is expected to increase the median PFS of Arm A from 16 months to 22.9 months, corresponding to a 30% reduction of the risk of progression (**average HR of 0.70**)