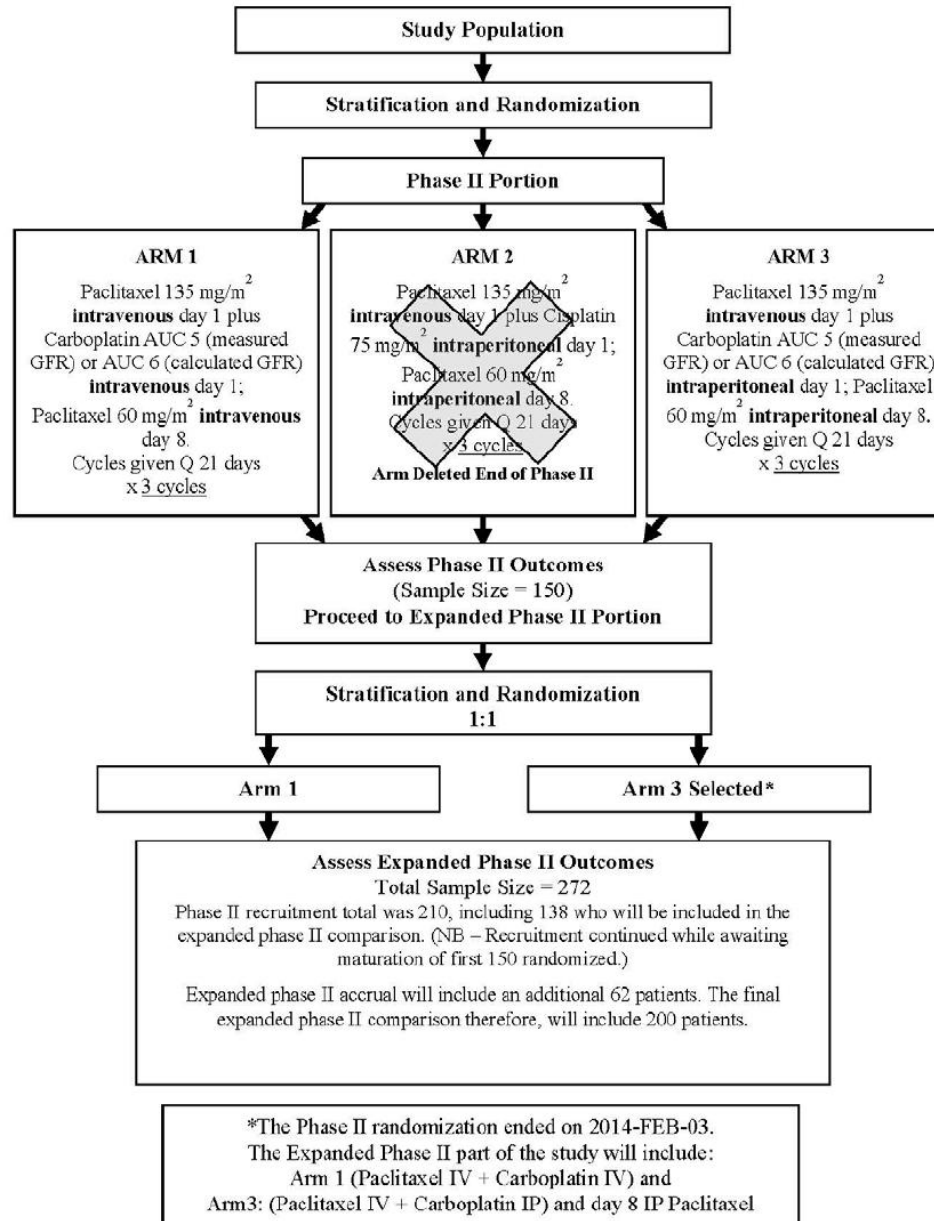
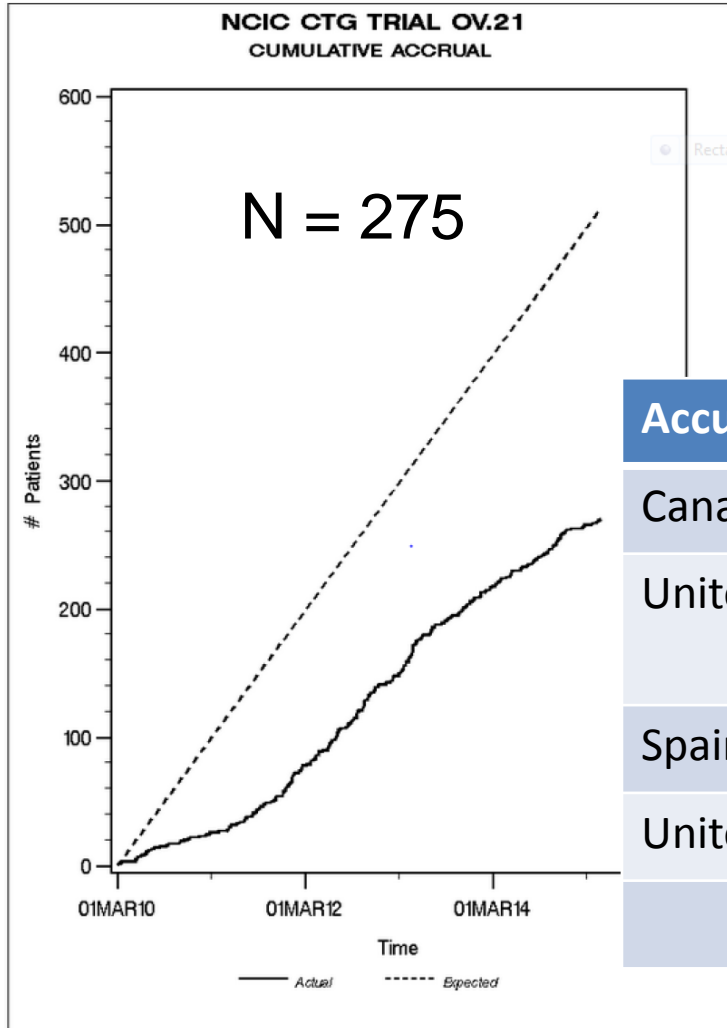


**OV.21
PETROC**





Thank you!

Accrual by Country

Canada (NCIC CTG)	173	63 %
United Kingdom (UCL)	74	27 %
Spain (GEICO)	18	6 %
United States (SWOG)	10	4%
	275	



IMPORTANT - Please submit outstanding tissue specimens

As a reminder, once the accrual target is met, an additional 9 months will be required in order for the data to mature so that the primary endpoint of 9 months PFS can be evaluated. So, final analysis would be expected approximately 1 year from when the accrual target is met.

The central office trial team is intensifying efforts to retrieve outstanding tissue specimens from patients who have consented to optional tissue banking on the trial. **Please review the status of your tissue submissions for OV.21, and ensure that tissue has been submitted for each of your consenting patients.**

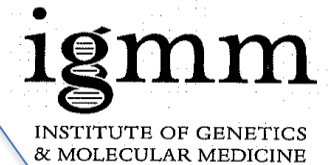
These tissue specimens are an extremely important component to the OV.21 trial, and are needed in order to pursue exciting and important translational research questions. A correlative sciences proposal for the OV.21 tissue will be presented to the Gyne Correlative Science Tumour Biology Working Group at the 2015 Spring Meeting.



OV-21/PETROC Translational Study



The Terry Fox Research Institute
L'Institut de recherche Terry Fox



Professor Charlie Gourley
Professor and Honorary Consultant
in Medical Oncology